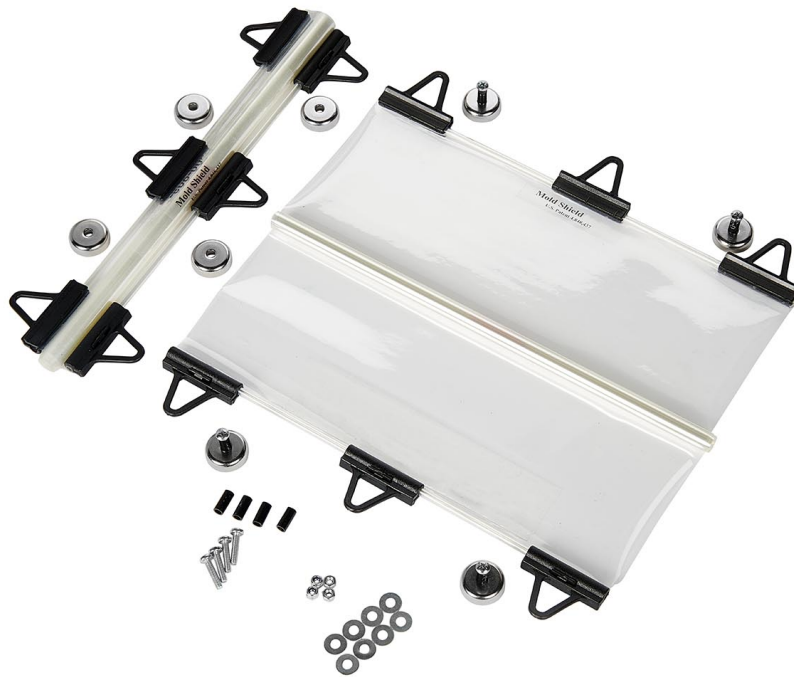


PCS Company

Moldshield™ Assembly, Installation & Operating Instructions



Operating Instructions

There is no need to remove Mold Shields to see into your mold.

When you have a need to reach into your mold, UN-HOOK one side of the Mold Shield and allow the mold shield to recoil slowly. If necessary UN-HOOK both sides of the mold shield and place it in a safe location while you are working on the mold. After completing the work inside your mold, RE-HOOK the mold shield and continue normal operation.

If there is a need to open your mold wider than the 24" [60 cm] Mold Shield width, UN-HOOK your Mold Shield first to avoid sliding the magnets off of the outside surface of your mold.

WARNING

Mold shields must be protected from open flames, sharp objects and hot purges. Careful handling will prolong the life of your mold shields.

Spare parts and support may be obtained from:

PCS Company
Fraser, MI 48026
1-800-521-0546

Visit PCS Company on the web @ www.pcs-company.com

Magnet Assembly Instructions

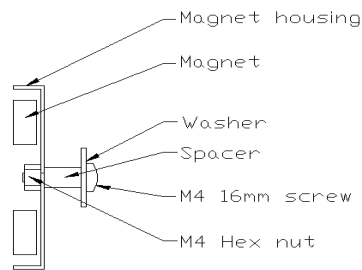
PCS Company's Moldshield™ is supplied with hardware for most installations. Should you have a special need refer to the Moldshield™ application notes.

Hardware packet consists of:

8 – screws 8 – washers 8 – hex nuts 8 – spacers

They should be assembled to the magnet in the following sequence.

- 1] Washer onto screw.
- 2] Spacer onto screw.
- 3] Insert screw into magnet house top.
- 4] Secure with hex nut.



Installation Instructions

Each Moldshield™ set contains two [2] mold shields, eight [8] magnets and a packet of hardware.

Step 1 Assemble magnets. CAUTION! Do not permanently attach magnets to the plastic handles.

Step 2 On each side of your mold place two [2] assembled magnets at appropriate locations. Take care not to trap any dirt or iron filings between magnet and mold frame.

Step 3 Hook the mold shields to the magnets being sure to use at least one [1] fixed hook on each side of each shield.

Step 4 Before putting the mold into production open and close slowly. Make adjustments to the magnet positions to ensure the mold shields are parallel and are not being crushed between obstructions.

Step 5 Start normal operation.

Moldshield™ Handle Information

Here is information about the number of handles that are attached to the various sizes of mold shields and which are fixed and which are sliding. This information is provided so that you can adjust the positioning of the handles to facilitate water lines and other issues.

MCUR0824	2 handles fixed handles both
MCUR1224	3 handles fixed handles numbers 1-3
MCUR1624	3 handles fixed handles numbers 1-3
MCUR2024	4 handles fixed handles numbers 1-4
MCUR2424	5 handles fixed handles numbers 1-3-5
MCUR3224	5 handles fixed handles numbers 1-3-6
MCUR4024	7 handles fixed handles numbers 1-4-7
MCUR4724	7 handles fixed handles numbers 1-4-7

Fixed handles are at each end and then they are evenly spaced.

Notes:

- (1) Non fixed handles move.
- (2) Handles can not be removed without damaging shield.
- (3) Fixed handles **may** be loosened with a sharp knock at the end of handle.
There is no guarantee this action will not damage the shield.
- (4) If the handle loop is an obstruction the loop part of the handle only may be cut off.